

## APPENDIX L: Floor Plans by Office

---

<b>Content</b>	<b>Page Number</b>
<a href="#"><u>Carson City – 3416 Goni Rd., Suite 132 Bldg. D</u></a>	<a href="#"><u>2</u></a>
<a href="#"><u>Carson City – 1761 College Parkway</u></a>	<a href="#"><u>3</u></a>
<a href="#"><u>Reno – 445 Apple St, Suite 104 (First Floor)</u></a>	<a href="#"><u>4</u></a>
<a href="#"><u>Reno – 445 Apple St, Suite 104 (Second Floor)</u></a>	<a href="#"><u>5</u></a>
<a href="#"><u>Las Vegas 1860 E Sahara Ave. (Main Office)</u></a>	<a href="#"><u>6</u></a>
<a href="#"><u>Las Vegas 1820 E Sahara Ave., Suite 207 (RD Unit/Fiscal/Admin )</u></a>	<a href="#"><u>7</u></a>
<a href="#"><u>Las Vegas 1840 E Sahara Ave., Suite 110 (SHIP Office)</u></a>	<a href="#"><u>8</u></a>
<a href="#"><u>IDEA – Part C</u></a>	<a href="#"><u>9</u></a>
<a href="#"><u>IDEA – Part C Las Vegas</u></a>	<a href="#"><u>10</u></a>
<a href="#"><u>Elko - 1010 Ruby Vista Dr., Suite 104</u></a>	<a href="#"><u>11</u></a>

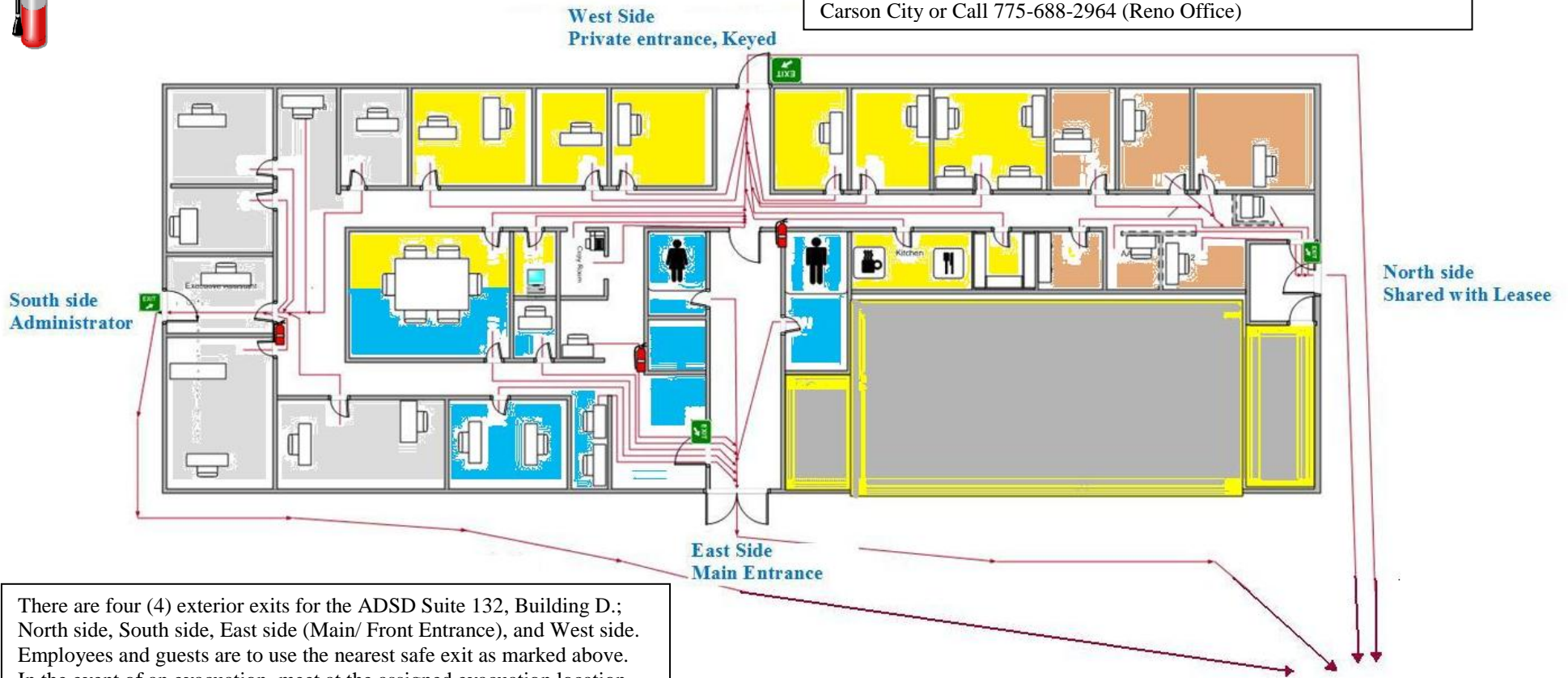
Floor plans with escape routes are to be posted in conspicuous locations in each common area and near exits. These floor plans should indicate the location and type of fire extinguisher or hose racks, as well as the location of the exits and the exit route each staff person is to use, depending on location of the staff person's office.

## Carson City – 3416 Goni Rd., Suite 132 Bldg. D



### Fire Extinguisher Location

Assigned meeting location after evacuation:  
 Southwest corner of College Parkway and Goni, near the Creekside Café.  
 Carson City or Call 775-688-2964 (Reno Office)

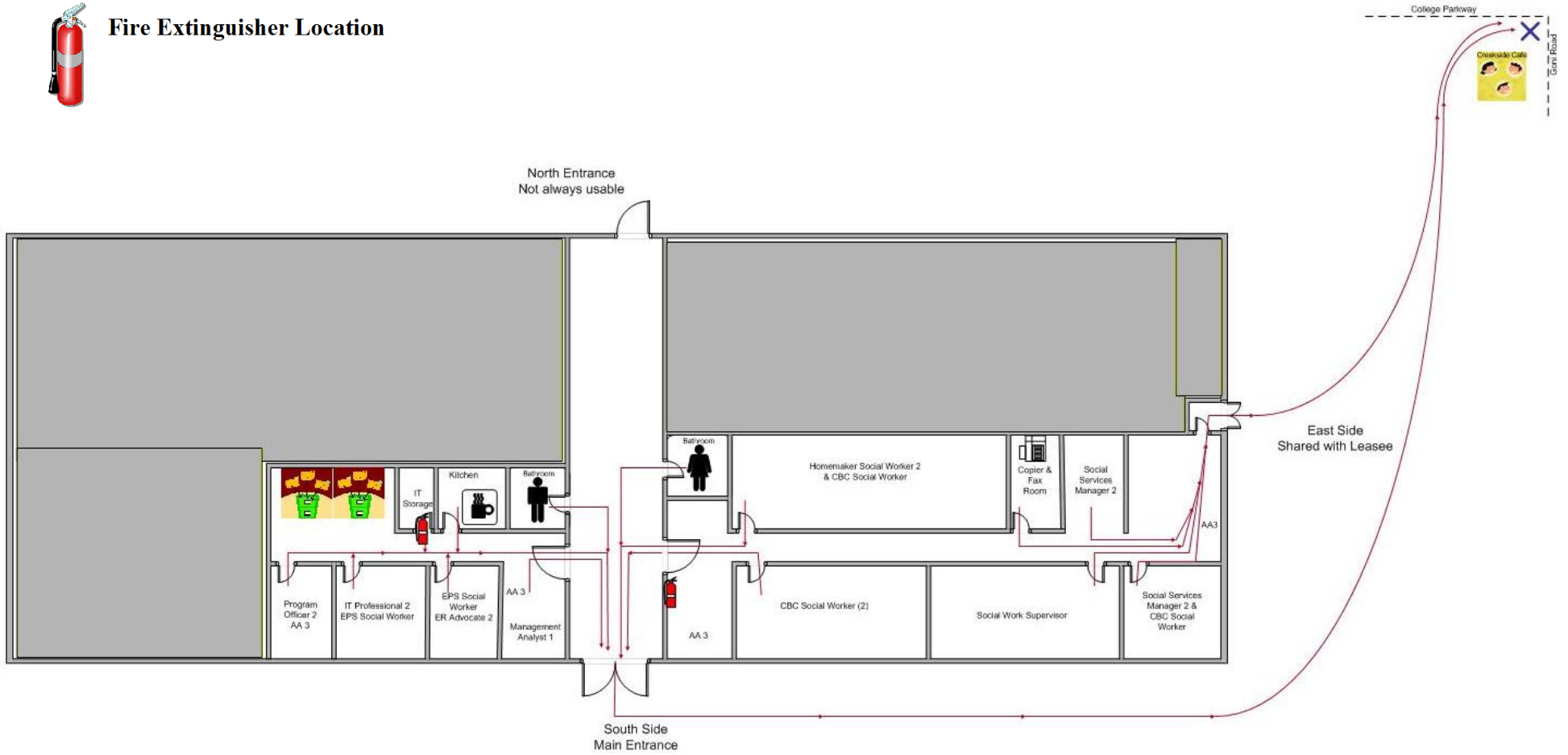


There are four (4) exterior exits for the ADSD Suite 132, Building D.; North side, South side, East side (Main/ Front Entrance), and West side. Employees and guests are to use the nearest safe exit as marked above. In the event of an evacuation, meet at the assigned evacuation location and ensure all staff are safe and accounted for. Accounting for all employees and guests should be completed immediately after evacuation and ensure accuracy and safety for everyone involved.

# Carson City – 1761 College Parkway

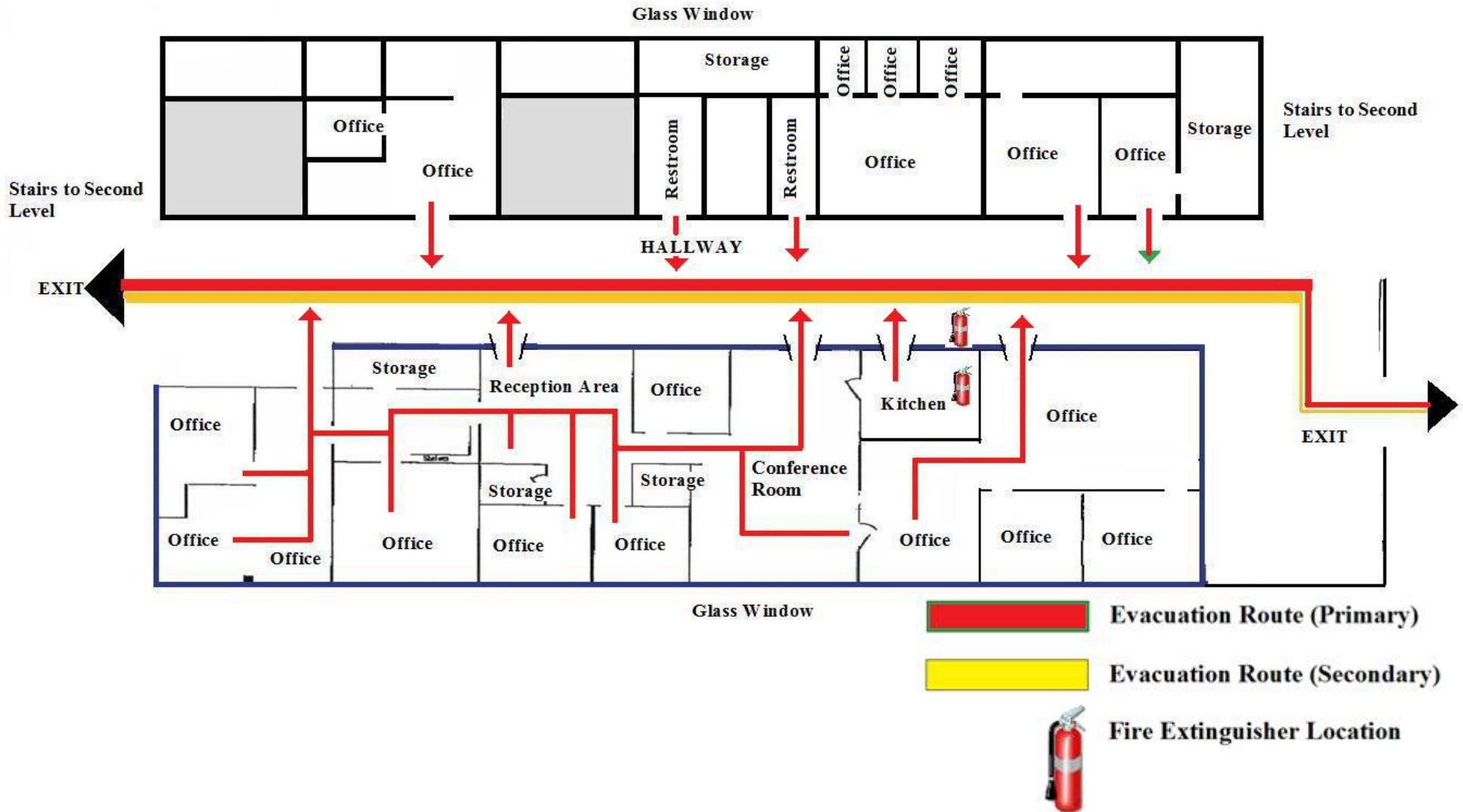


## Fire Extinguisher Location

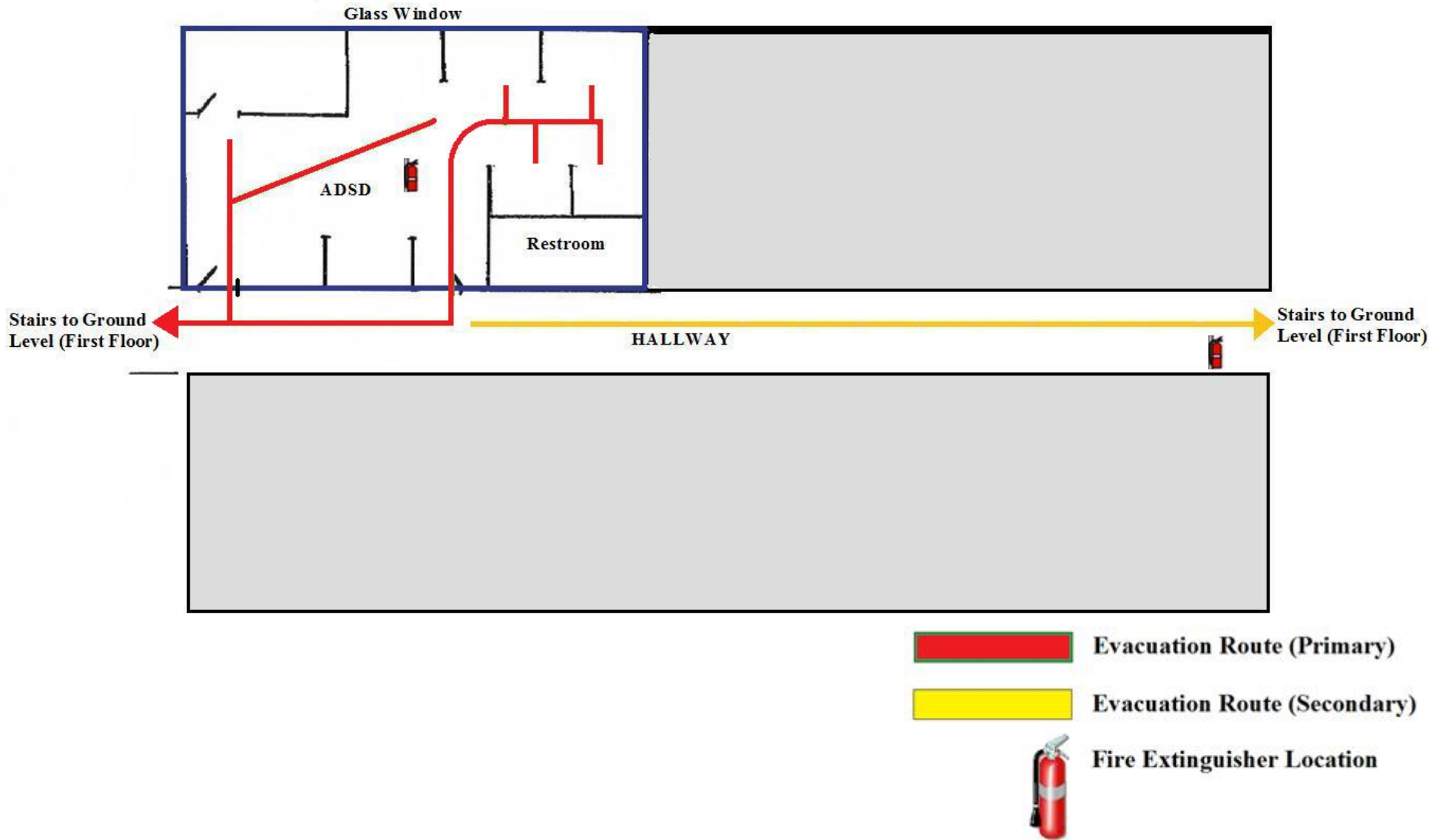


There are two (2) exterior exit doors in this building: South side and East side. Employees and guests are to use the nearest exit to their location as marked above. Once away from the building, everyone is to meet at the assigned gathering location to ensure that everyone is accounted for and safe.





## Reno – 445 Apple St, Suite 104 (First Floor)



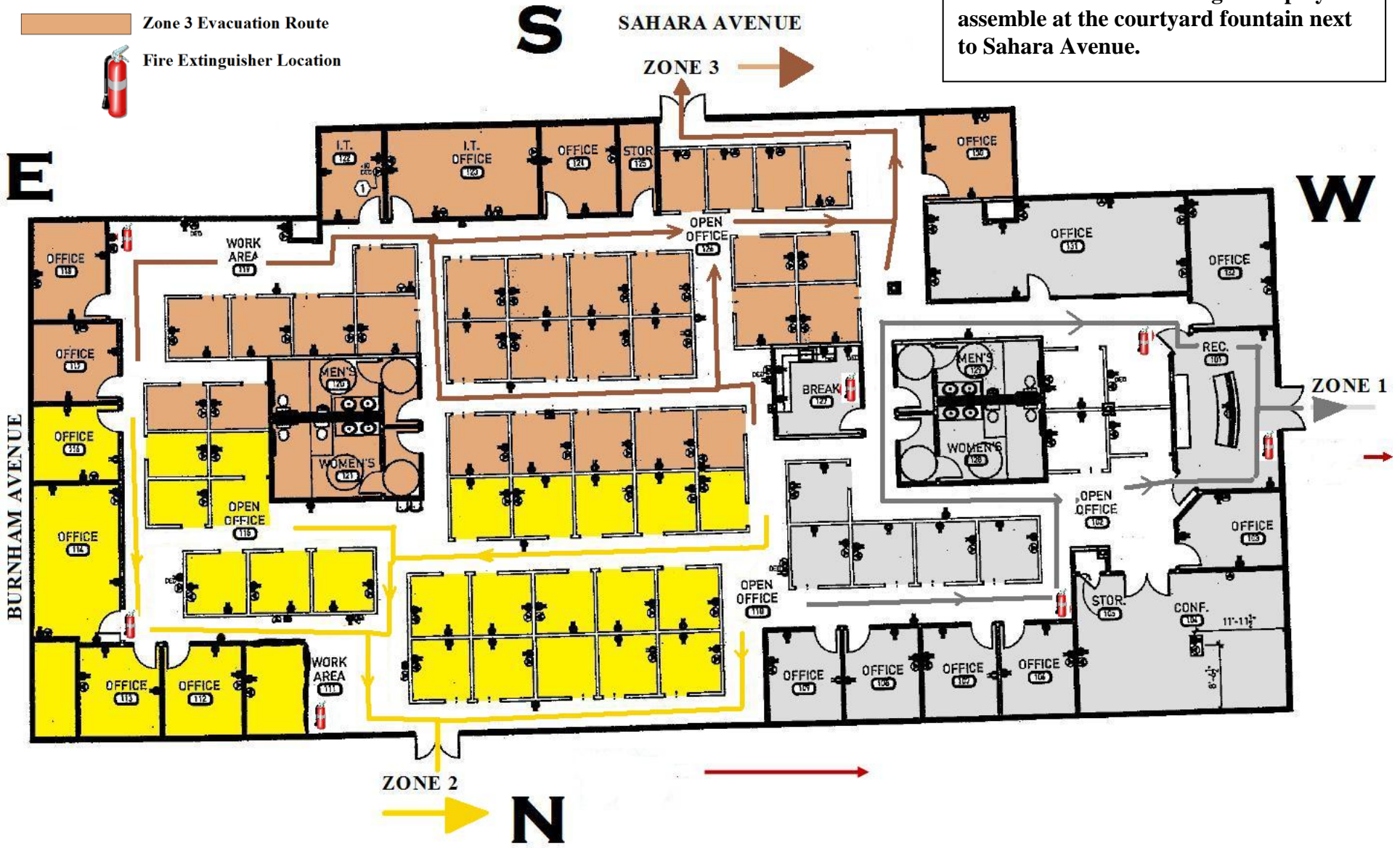
**Reno – 445 Apple St, Suite 104 (Second Floor)**



# Las Vegas 1860 E Sahara Ave. (Main Office)

-  Zone 1 Evacuation Route
-  Zone 2 Evacuation Route
-  Zone 3 Evacuation Route
-  Fire Extinguisher Location

After Evacuation- Las Vegas Employees assemble at the courtyard fountain next to Sahara Avenue.



# Las Vegas 1820 E. Sahara Ave., Suite 207 (RD Unit/Fiscal/Admin)



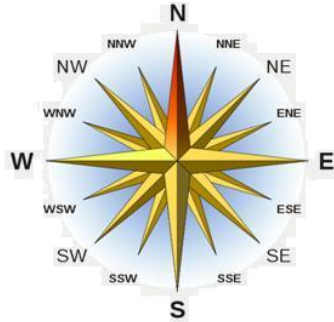
Evacuation Route (Primary)



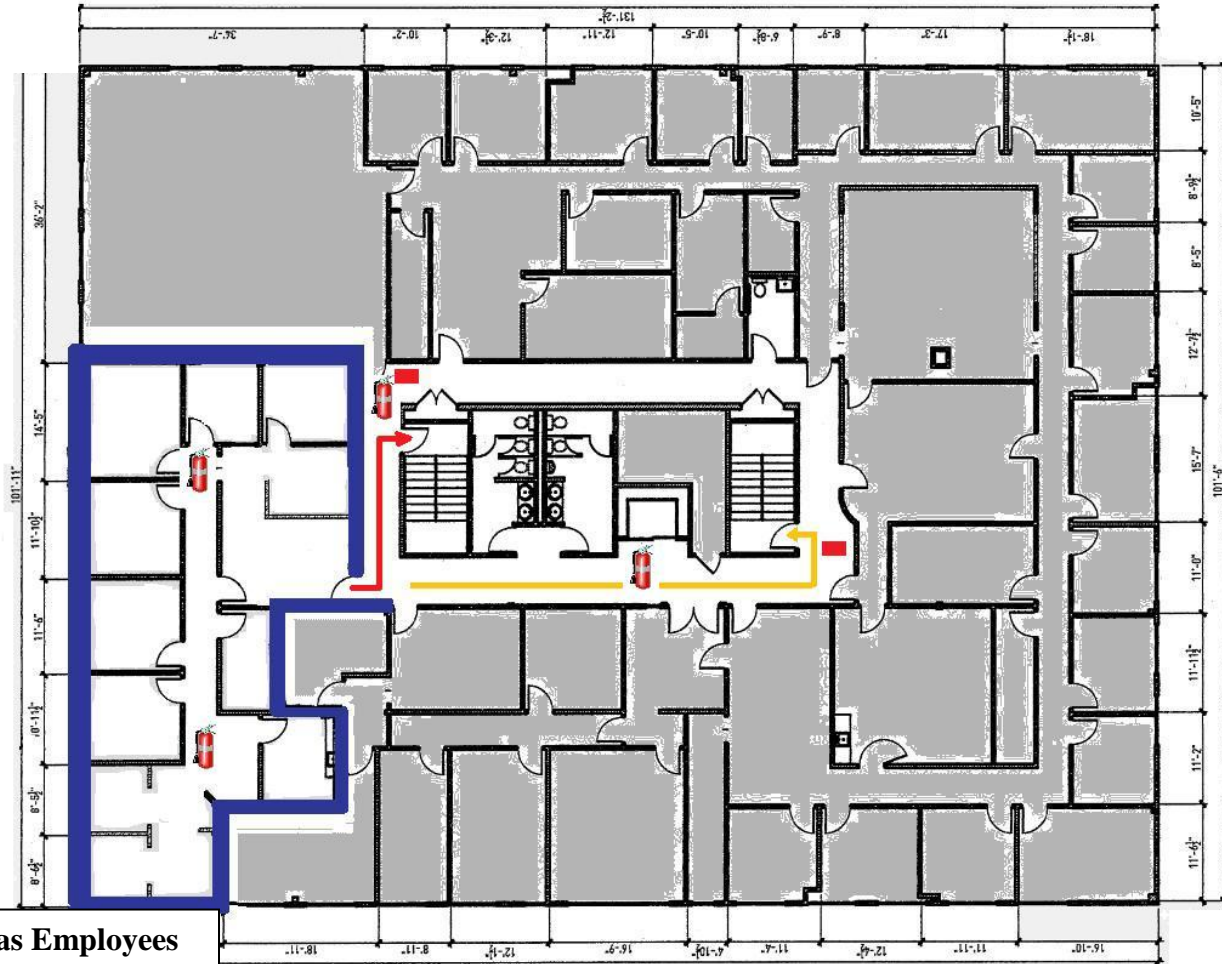
Evacuation Route (Secondary)



Fire Extinguisher Location



W



N




E

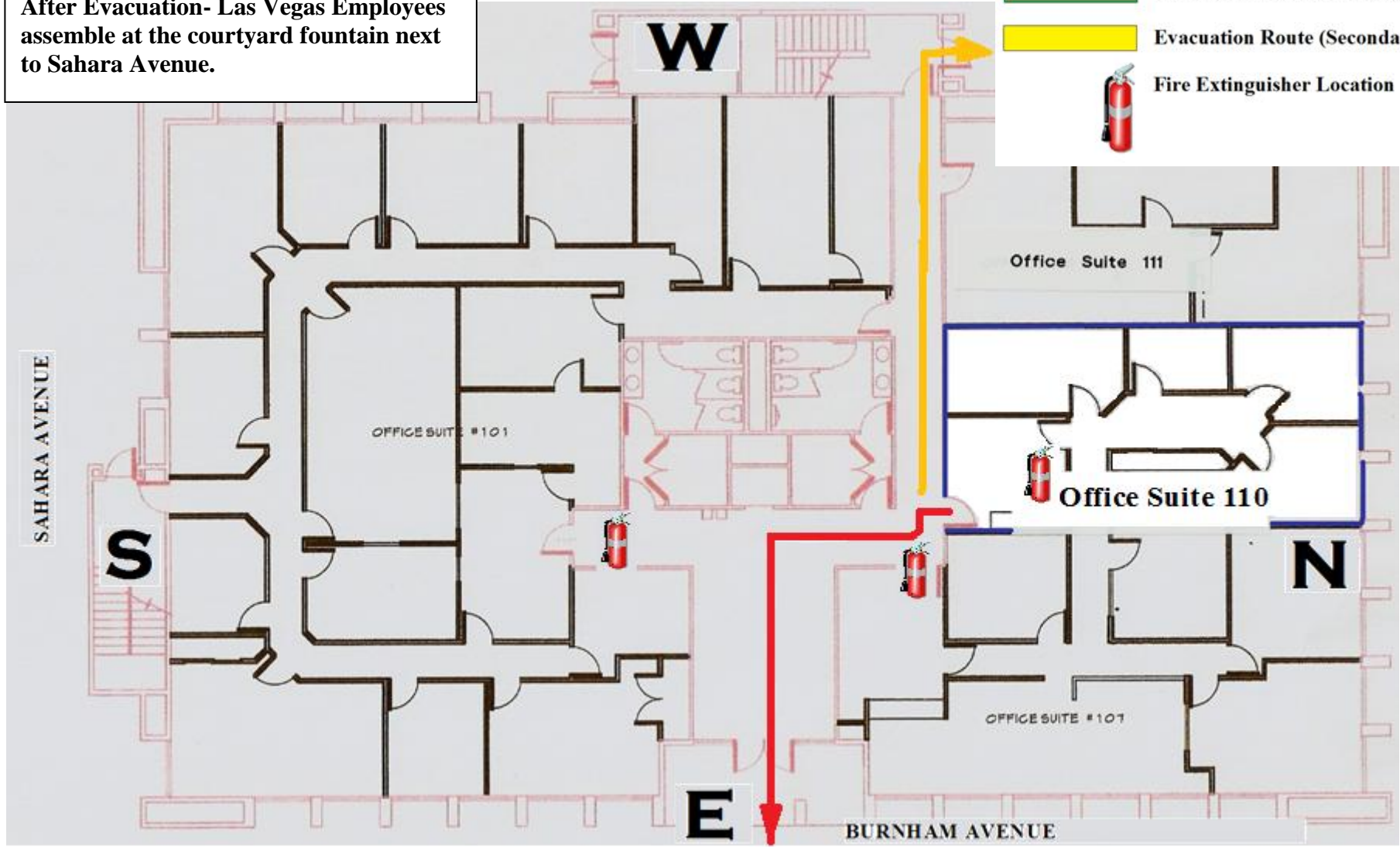
S

**After Evacuation- Las Vegas Employees assemble at the courtyard fountain next to Sahara Avenue.**

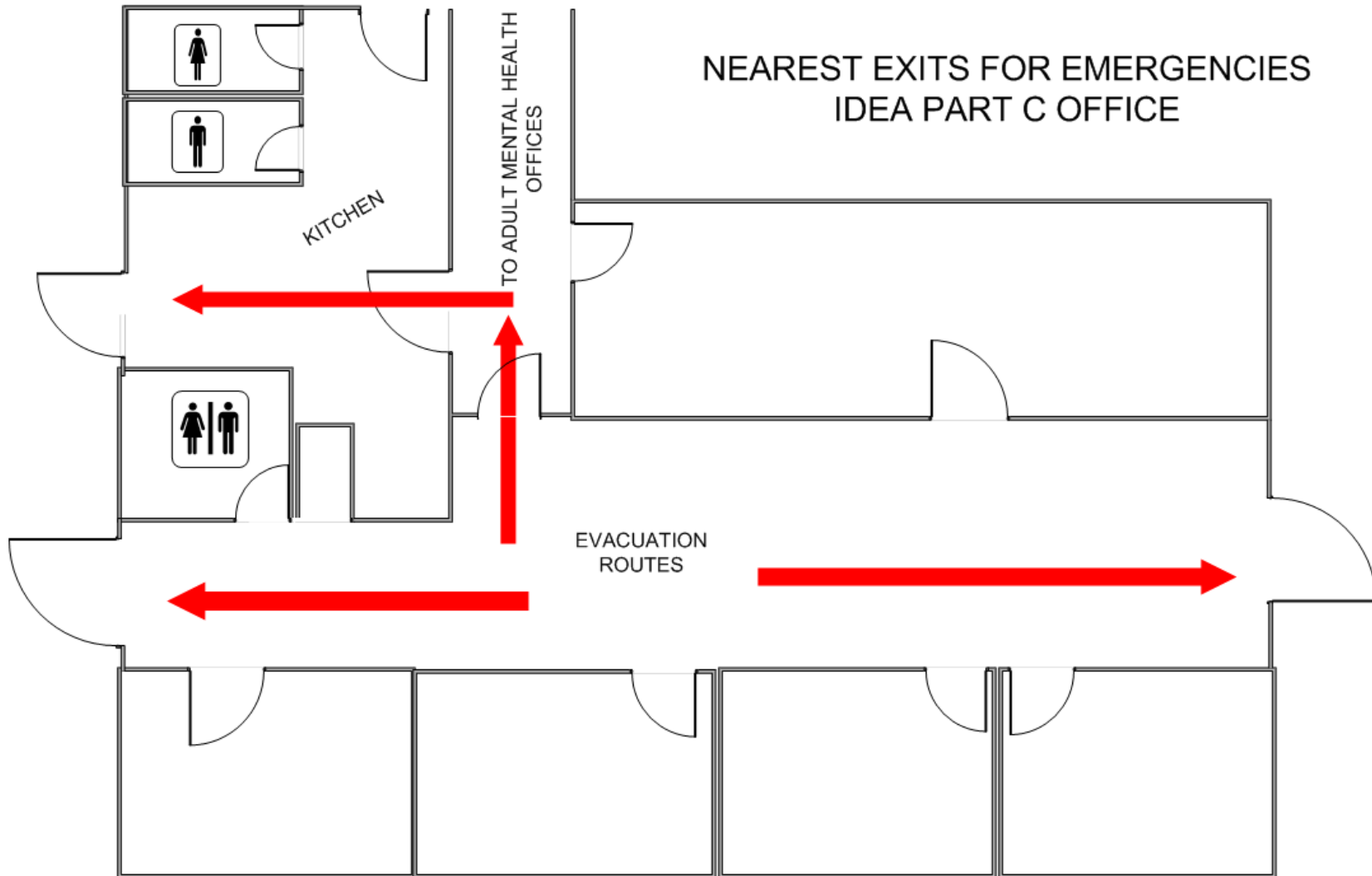
# Las Vegas 1840 E. Sahara Ave., Suite 110 (SHIP Office)

After Evacuation- Las Vegas Employees assemble at the courtyard fountain next to Sahara Avenue.

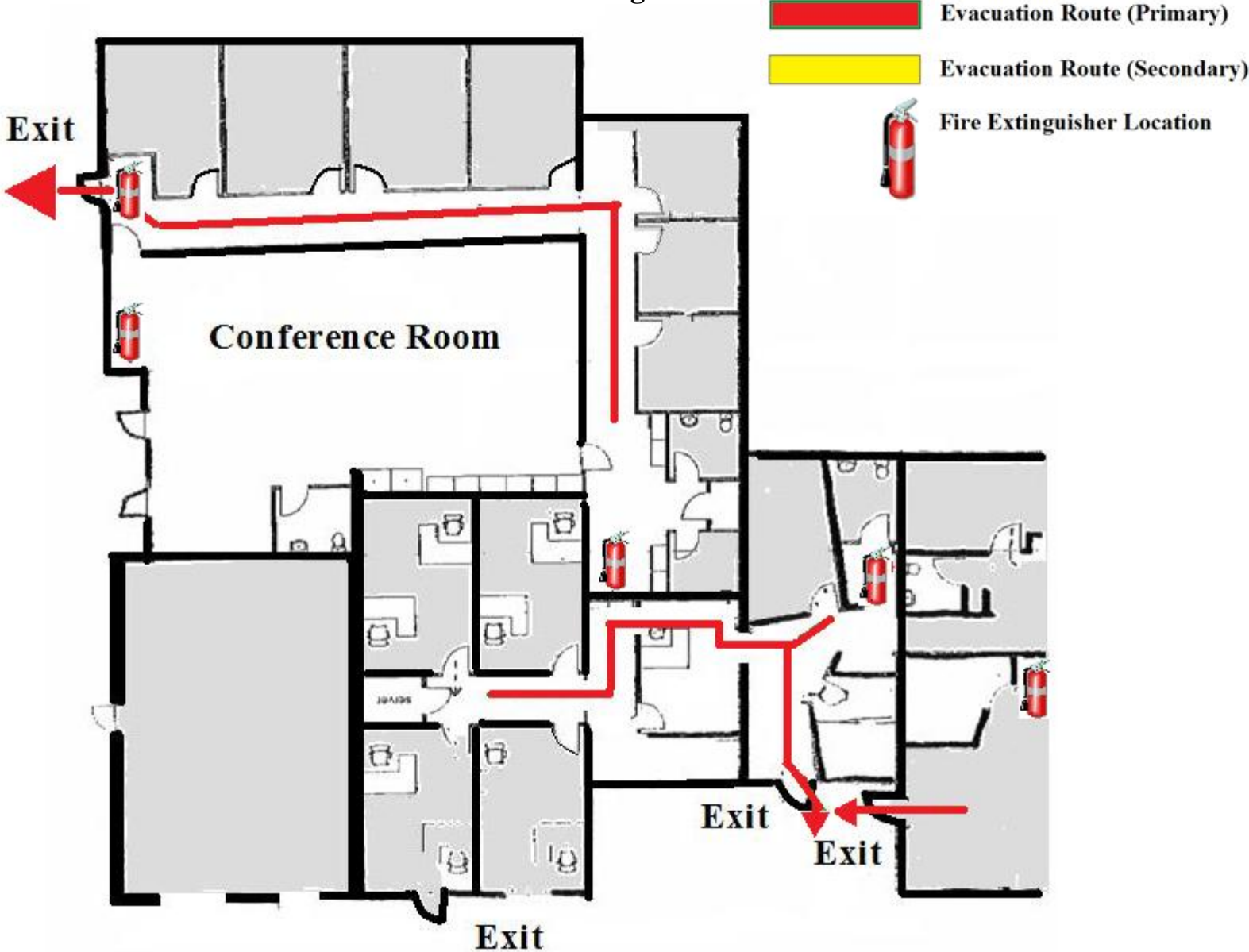
-  Evacuation Route (Primary)
-  Evacuation Route (Secondary)
-  Fire Extinguisher Location



**IDEA – Part C**



IDEA – Part C Las Vegas



Elko - 1010 Ruby Vista Dr., Suite 104

